

TEXTILE DUCT

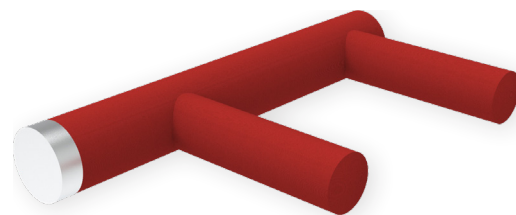
TEXI DUCT

Texi Duct was designed to transport air inside buildings. The nature of the duct itself allows face velocities up to 8m/s, allowing for a reduction in duct size.

Its low leakage rate (excluding PVC) surrounds the duct with an air halo, especially in cooling mode, which avoids the need to insulate the ducts.

The many shapes available enable to adapt to all configurations and constraints encountered in buildings.

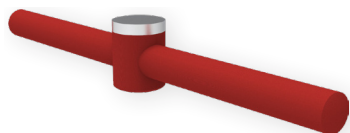
Its low weight also enables buildings renovation with few stress on the structure.



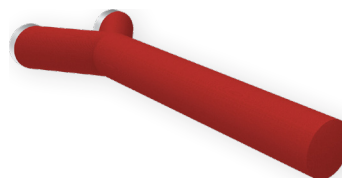
APPLICATIONS

Air transport indoor

Collectors for distribution on diffusion ducts



Examples of possible ductworks :



AVANTAGES

- Easy to install, can be handled and installed by one person.
- Available with all support systems
- No need of insulation in cooling mode. The **leakage rate** avoid condensation on the duct (excluding PVC).
- Ideal for installation with sprinklers
- Can be connected to circular or rectangular ducts as well as directly to supply units
- **Low weight , easy to install and very low stress on the existaing structure.**
- Fully washable for fabric installations other than A2-s1-d0

LIMITES OF USE

- Can not be used outdoor.

FABRICS



All waterproof or low-permeability fabrics to limit losses along the length.

GTTEXIDUCT_10/2022_EN. Les informations données dans cette fiche technique ne sauraient être considérées comme contractuelles. F2A se réserve le droit de modifier sans préavis les données portées dans ce document, dans le cadre de l'évolution de ses produits.