

# AIRTIGHT FRAMED SLEEVE

## ELYT+

The **ELYT+ flexible sleeve** is an airtight framed sleeve available in two versions:

- ELYT+ M: Sleeve ready to be installed – delivered assembled
- ELYT+ A: Sleeve ready for assembly – delivered unassembled at the requested size



The **ELYT+ sleeve** is designed to satisfy many criteria such as:

- High air tightness to comply with low energy building requirement: airtightness class B and D according to EN 15727 standard
- Continuity or improvement of the air tightness of your equipment or duct network,
- Patented frame design for a perfect squaring and mounting on any kind of duct frame or unit.
- Large range of fabrics available to meet different constraints (fire classification, pressure, humidity, corrosiveness, insulation, ...),
- Easy and quick assembly for you or your customers. No tools required.
- Safe and easy handling : no sharp pieces,
- Minimization of the transport or storage volumes,
- No offcuts and rejects in the « ready for assembly » version.

## CONSTRUCTION

### Frame

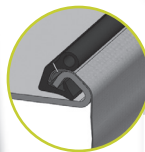
Galvanized steel Z275 profiles – 1,0 mm thick  
*Also available in aluminium and stainless steel 304L*

Flange 30 mm  
*Also available in 20 mm*

Frame assembly without additional angle fasteners  
**F2A patented design**

Oblong holes in each corner  
*Special drilling available on request*

90° flange connection  
*Flat connection also available*



The ELYT+ is custom-made, from 240 x 240 mm to 2200 x 2200 mm with standard frame profiles of 20 or 30 mm. Bigger dimensions are provided with reinforced profiles and additional angle fasteners. Smaller sizes from 80x80 mm.

### Fabric

Polyurethane coated fiberglass fabric:  
– Fire class A2-S2-D0 according to EN 13501  
PVC coated Polyester:  
– Fire class M1 (equivalent to B according to EN 13501)  
*Other fabric on request*

Standard height 130 mm  
*Other depths on request*

### Gasket

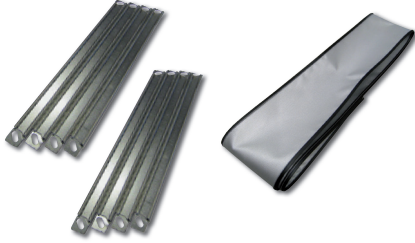
TPE gasket sewed on the fabric  
Inserted in the frame profiles to guarantee airtightness  
Airtightness according to EN 15727: **class B or D**  
depending on fabric

# AIRTIGHT FRAME SLEEVE

## ELYT+

### ELYT+ A: «READY FOR ASSEMBLY» VERSION

#### A simple, easy and quick assembly



Watch the ELYT+ assembly video by scanning this code.

#### *Delivery includes:*

- 8 profiles prepared at your dimensions
- 1 sleeve at your dimensions

Frame profiles are designed with an exclusive patented system of clips. To assemble the frame, you simply slide one inside each other the profiles without additional pieces and without any tools.

The main part of the sleeve is then secured on the frame with an airtight gasket inserted into the frame rim groove.

Squaring of the sleeve is perfect and the oblong holes in the angles enable mounting on any kind of standard frames.

As an option, the frame can be drilled all along the width and height.

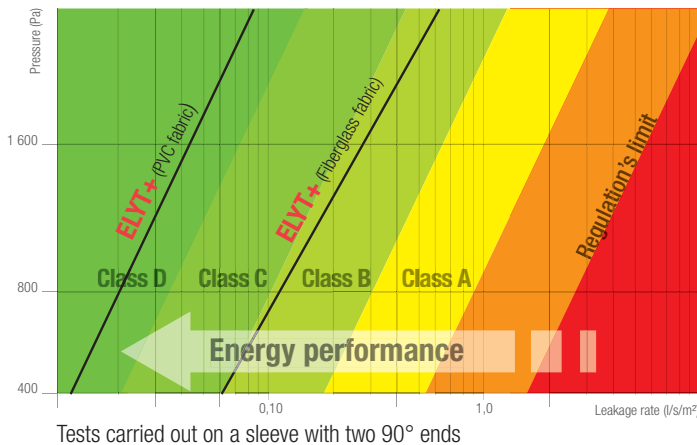
 Rounded edges to avoid any risk of injury or damaging the fabric of the sleeve.

### CHARACTERISTICS

	ELYT+ sleeve fiberglass fabric – Fire class A2-S2-D0	ELYT+ sleeve Polyester fabric – Fire class M1 & NC (Euroclass equivalence = B)
<b>Airtightness</b>	<b>Class B</b> according to EN 15727 standard (equivalent to Class B according to EN 1751 standard)	<b>Class D</b> according to EN 15727 (equivalent to Class C according to EN 1751 standard)
<b>Pressure resistance</b>	2 000 Pa under negative or positive pressure	
<b>Operating temperature</b>	From -20°C to +90°C	From -30°C to +70°C
<b>Dimension range</b>	From 240 x 240 mm to 2200 x 2200 mm: profiles in one piece. Beyond these sizes, profiles in several pieces.	

### AIRTIGHTNESS TEST RESULTS

#### ELYT+ airtightness according to EN 15727



#### Test conditions:

- Test carried out under pressure
- Dimensions: 400 x 400 mm
- Height: 130 mm

